

Management of the Fairway Data in Finnish Maritime Administration

Kimmo Heiskari M.Sc. (Geogr.)
Waterways Division
27.9.2007



**Finnish Maritime
Administration**

Fairway Database = VÄRE



- **Navigation lines**
- **Fairway Areas**
- **Optical Lines**
- **Dredging Areas**
- **Spoil grounds**
- **Restricted Areas**
- **Other Data (Harbour Areas, Canal Areas...)**

Aid to Navigation Database = VATU



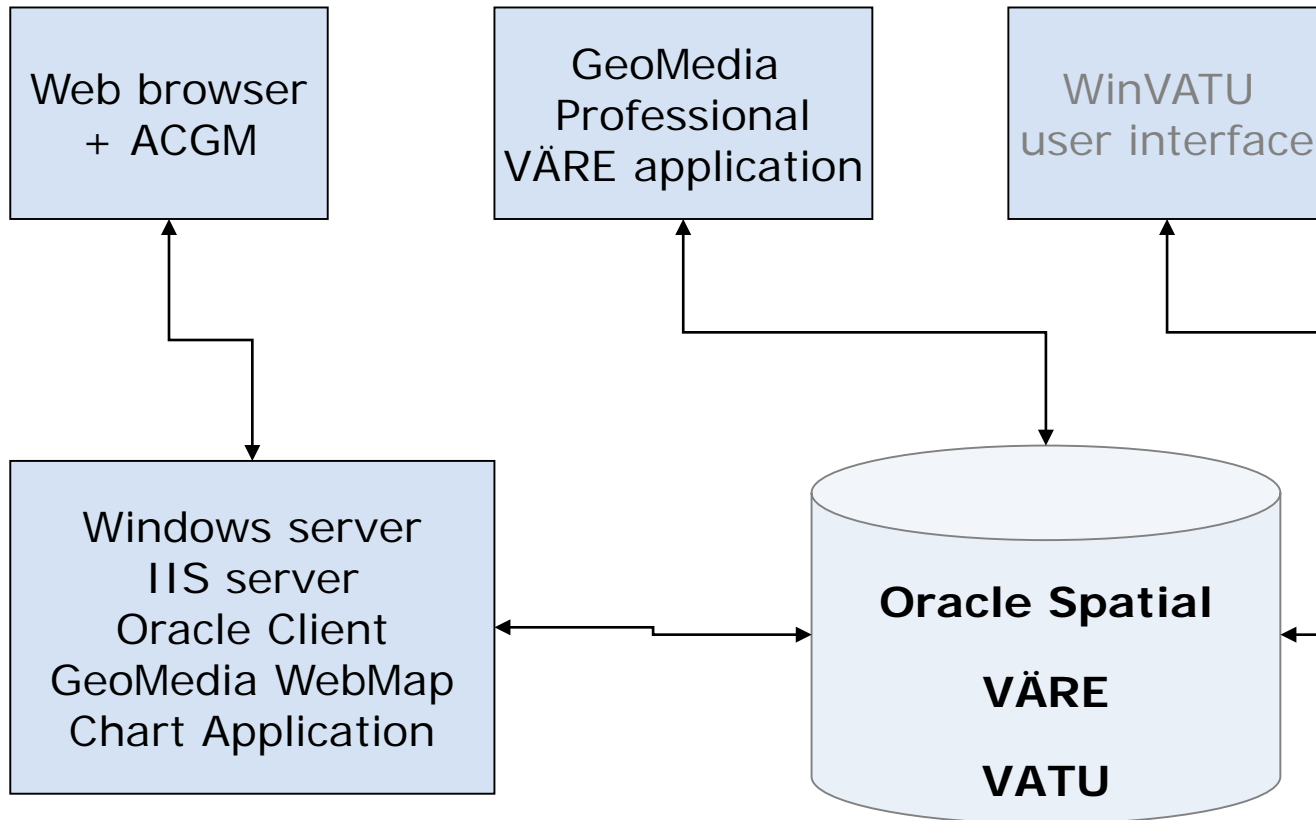
- Aids to Navigation (basic data and navigational data)
- Waterborne Traffic Signs



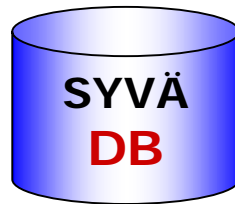
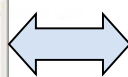
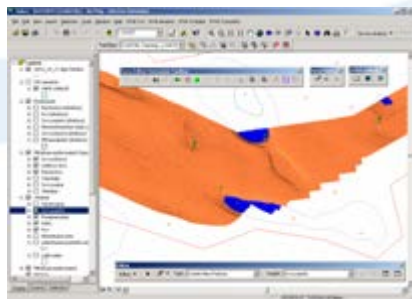
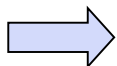
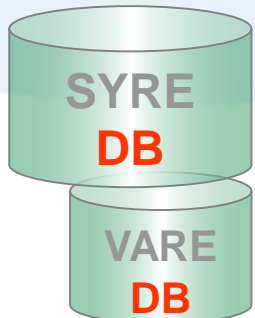
Customers

- **Hydrographic Department**
 - chart production (printed nautical charts, ENC)
 - publications (Notices to Mariners/Yachtsmen, List of Lights)
- **Waterways Department** (reports, statistics etc.)
- **Traffic Department** (VTS-systems)
- **Internal production** (waterways planning, waterway production, survey production)
- **Outside the FMA** (constructor offices, Finland's Environmental Administration, National Land Survey of Finland, Statistics Finland etc.)

Software Architecture



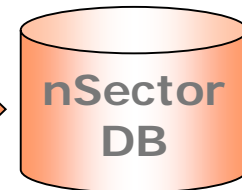
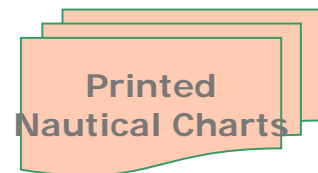
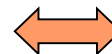
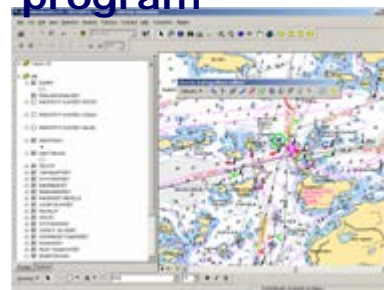
Depth information



SYVÄ -Program



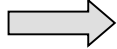
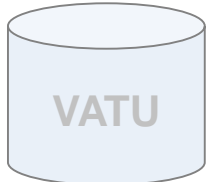
nSector - program



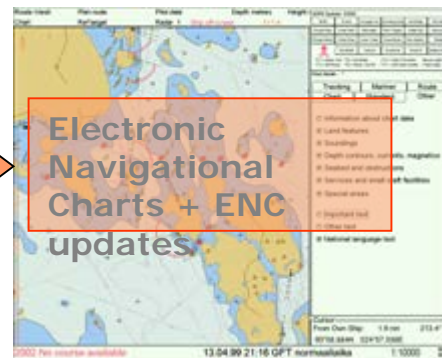
OTHER SOURCE INFO

INFORMATION OF NLS'S

FAIRWAY DATA



'KATISKA' -Program

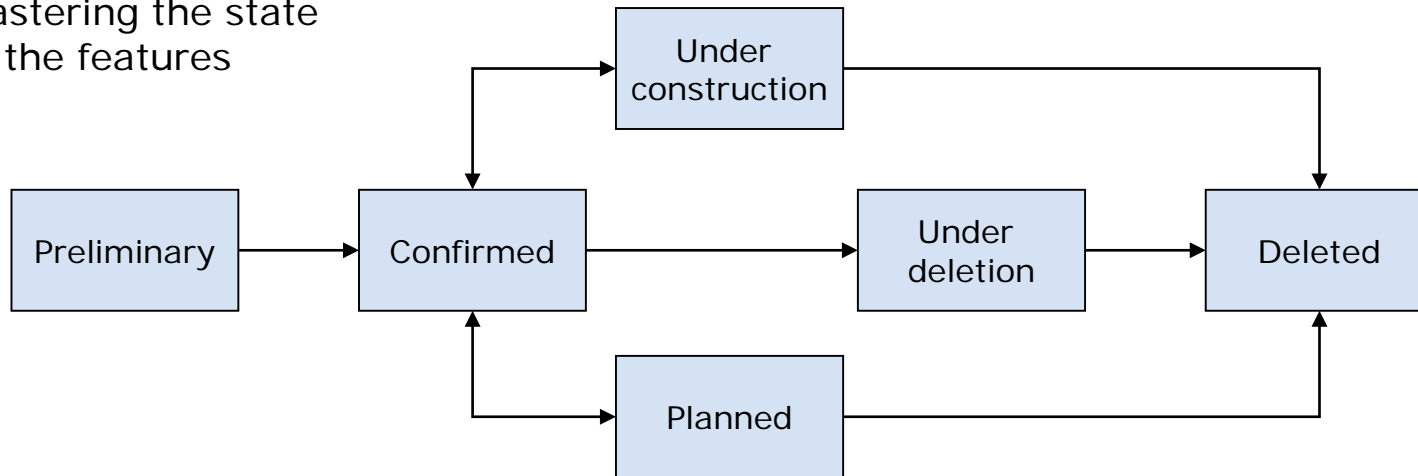


AtoN

Management Process

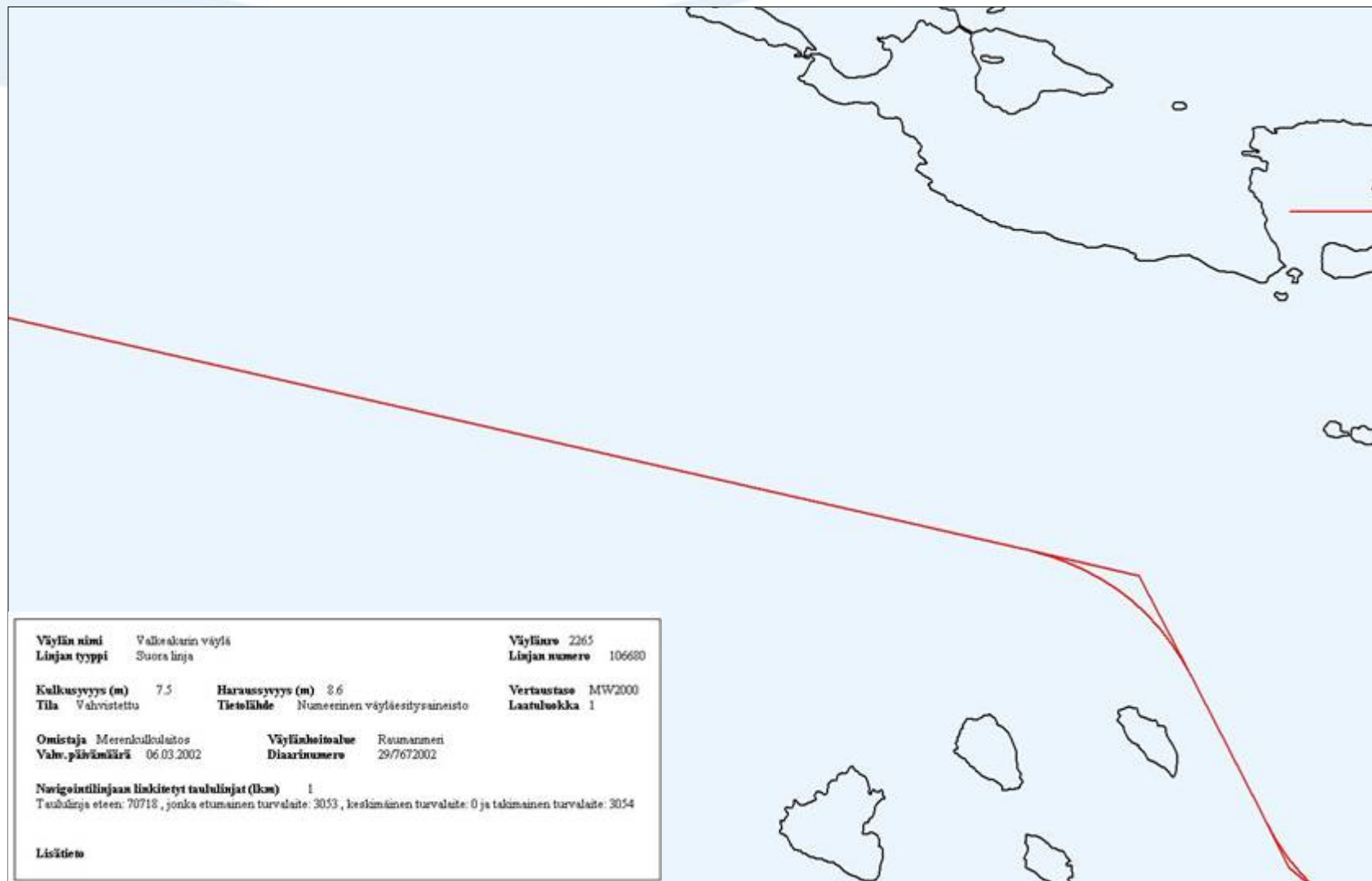
- **Fairway Data Management Team (Helsinki, Lappeenranta, Turku, Vaasa)**

Mastering the state of the features

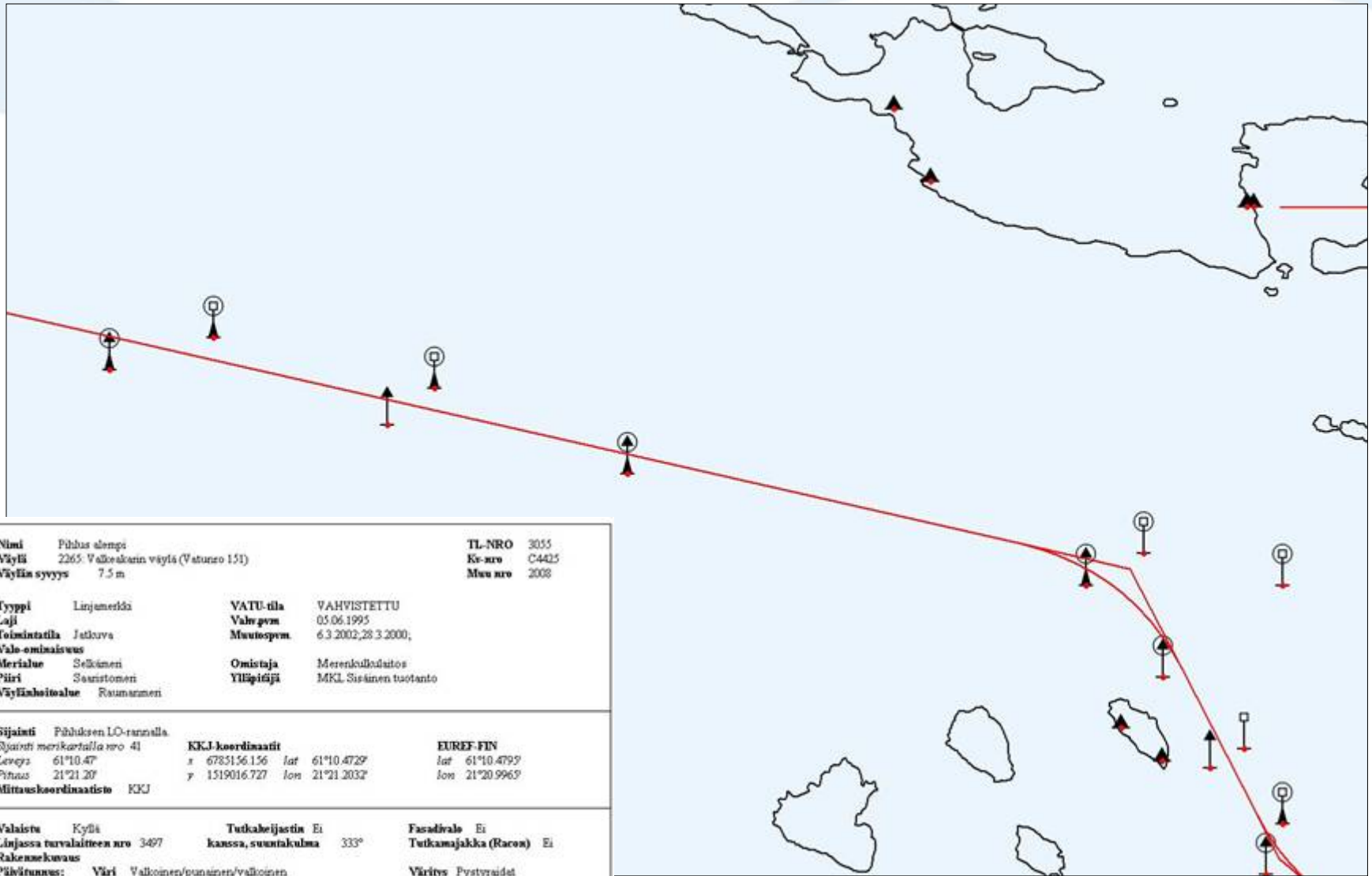




Navigation lines

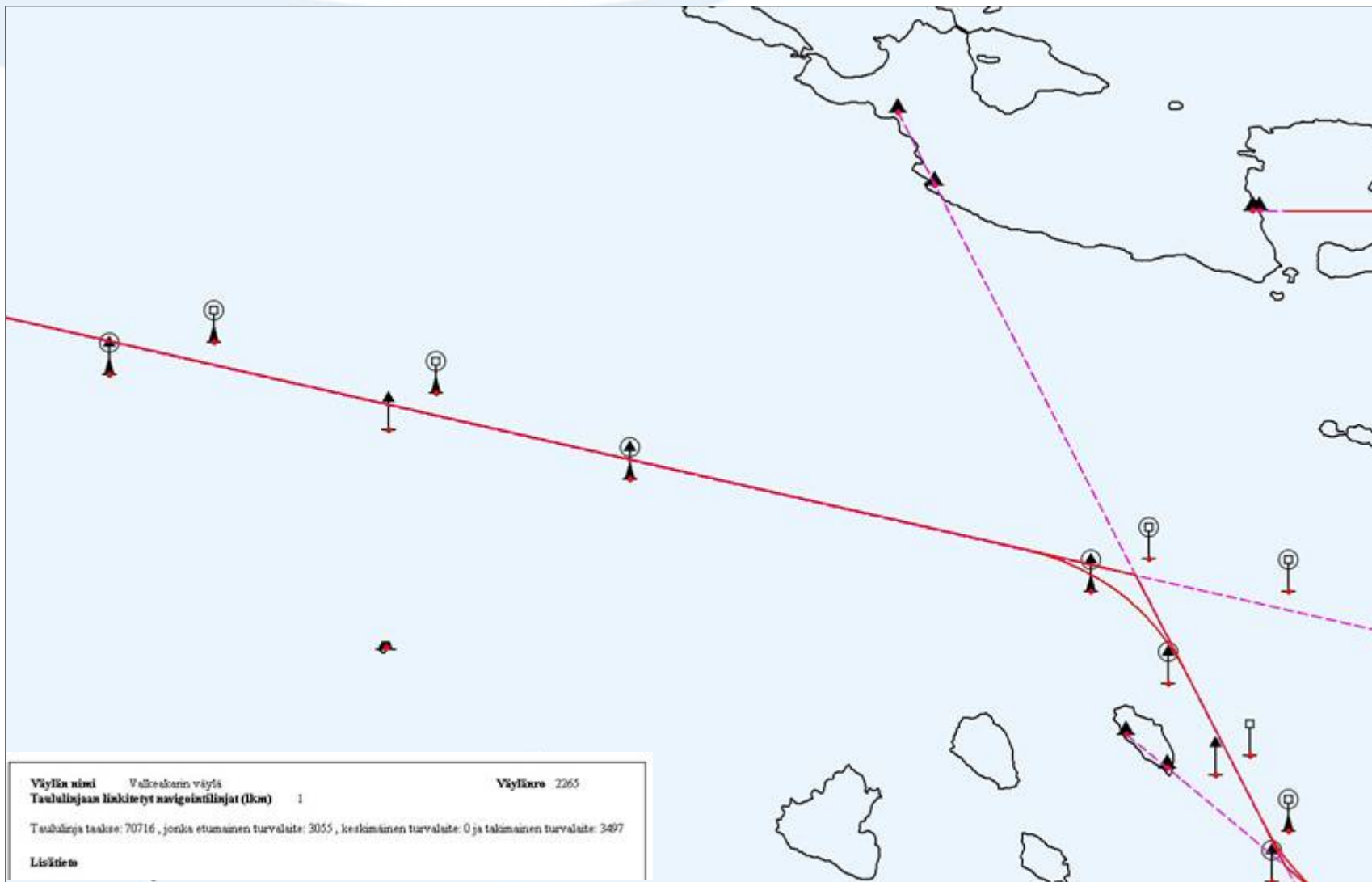


Aids to Navigation

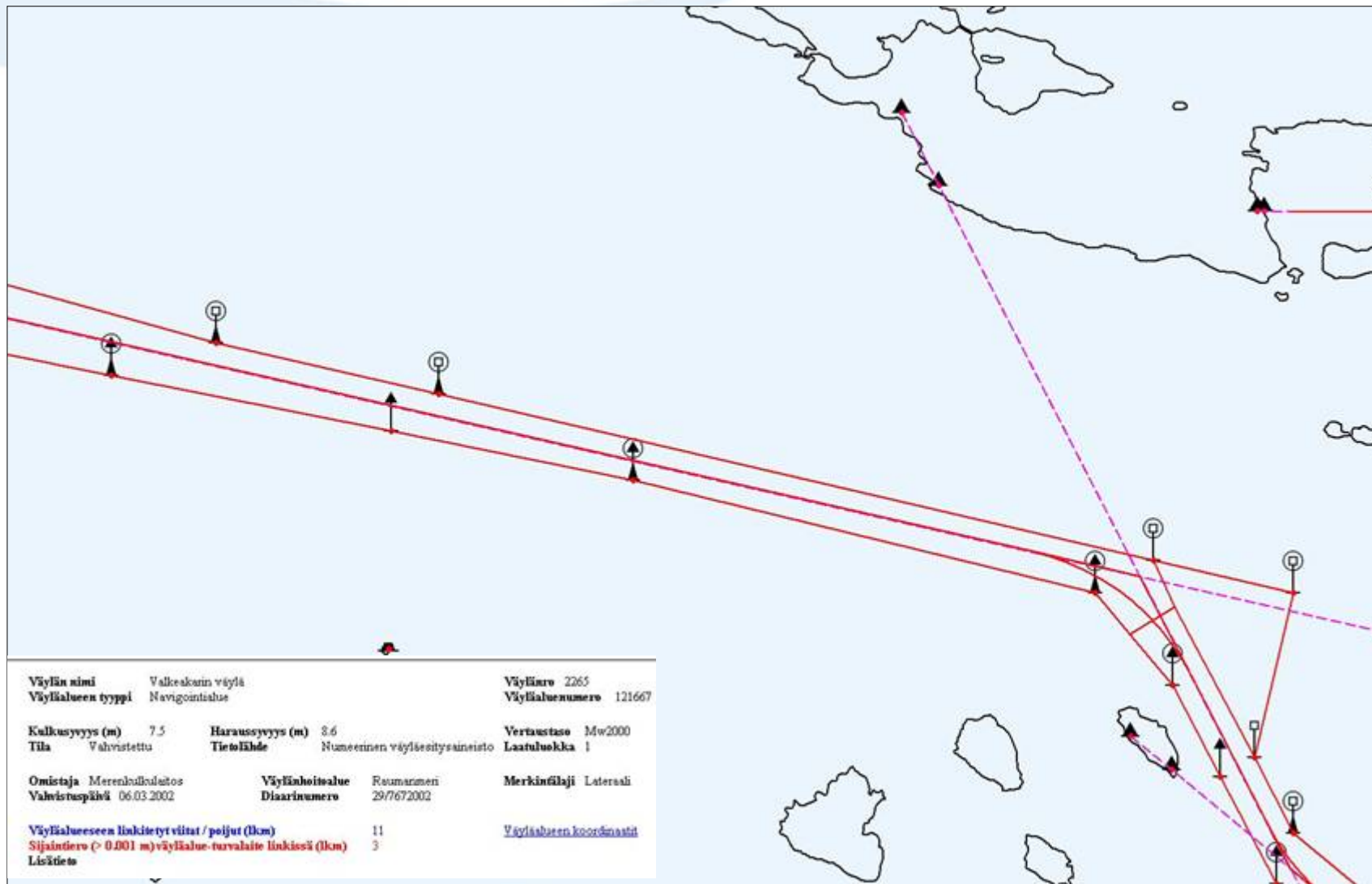


Nimi	Pihlus olengi	TL-NRO	3055
Väyli	2265: Valkokorin väylä (Vatuno 151)	Kv-nro	C4425
Väylän syvyys	7.5 m	Muu nro	2008
Tyyppi	Linjamerkki	VATU-tila	VAHVISTETTU
Laji		Valv.pvm	05.06.1995
Toissintila	Jatkuva	Muutospvm	6.3.2002,28.3.2000,
Valo-ominaisuus		Omistaja	Merenkulutus
Merialue	Selkämäen	Ylläpitäjä	MKL Sisäisen tuotanto
Piiri	Saastomeren		
Väyläohjealue	Raumanmeren		
Sijainti	Pihluseen LO-runnalla Sijainti merikartalla nro 41	KKJ-koordinaatit	EUREF-FIN
Leveys	61°10.47'	<i>x</i> 6785156.156	<i>lat</i> 61°10.4729'
Pituus	21°21.20'	<i>y</i> 1519016.727	<i>lon</i> 21°21.2032'
Mittauskoordinaatio	KKJ		<i>lon</i> 21°20.9965'
Valaistu	Kyllä	Tutkakeijastin	Ei
Linjassa turvalaitteen nro	3497	kaussa, suuntakulma	335°
Rakennekuvaus		Fasadivalo	Ei
Päivärunaus:	Väri Valkoinen/punainen/valkoinen	Tutkamaajakka (Racon)	Ei
Muoto	Suorskaide	Väritys	Pystyraidat
Lisätieto			

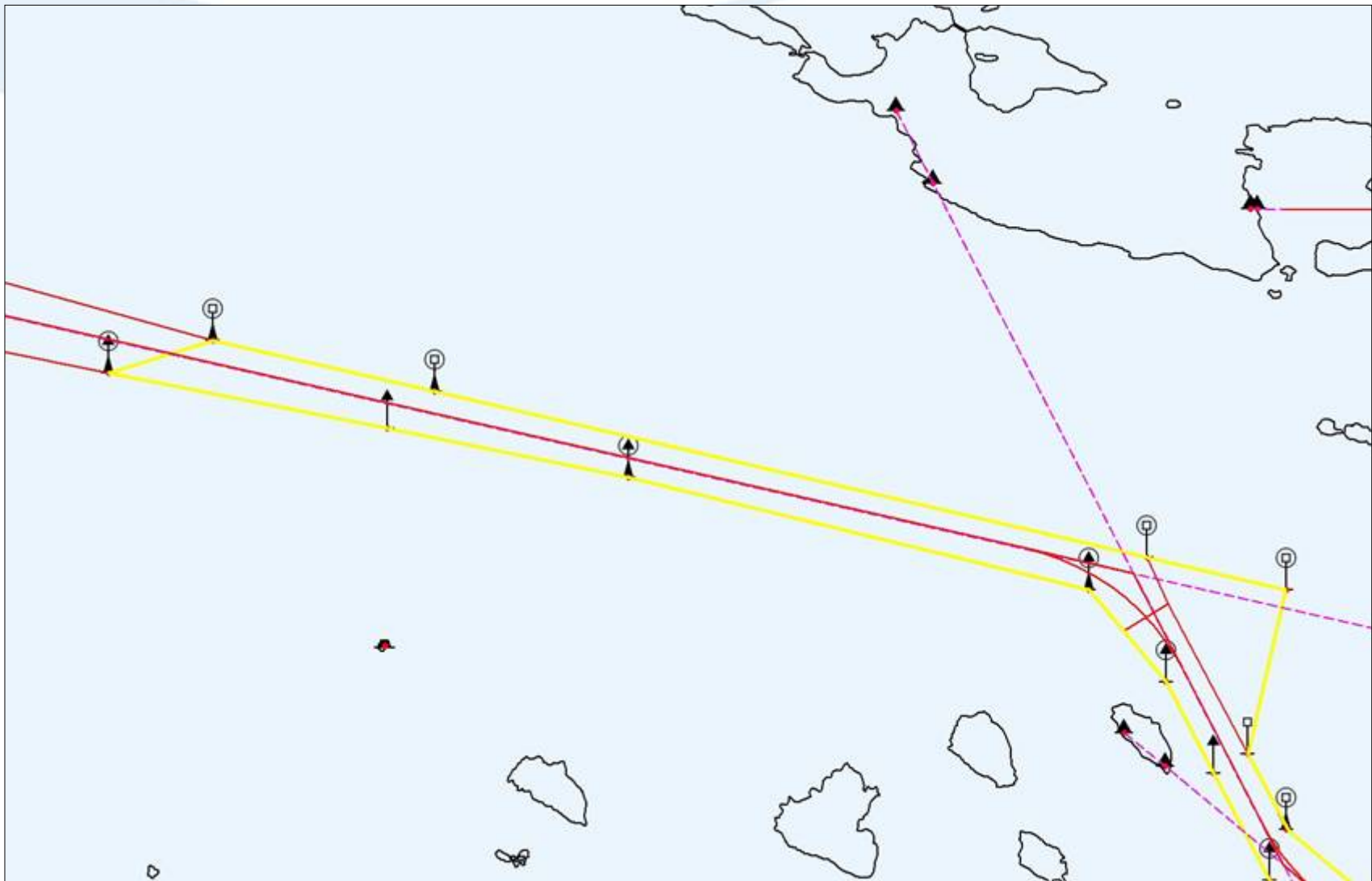
Optical lines



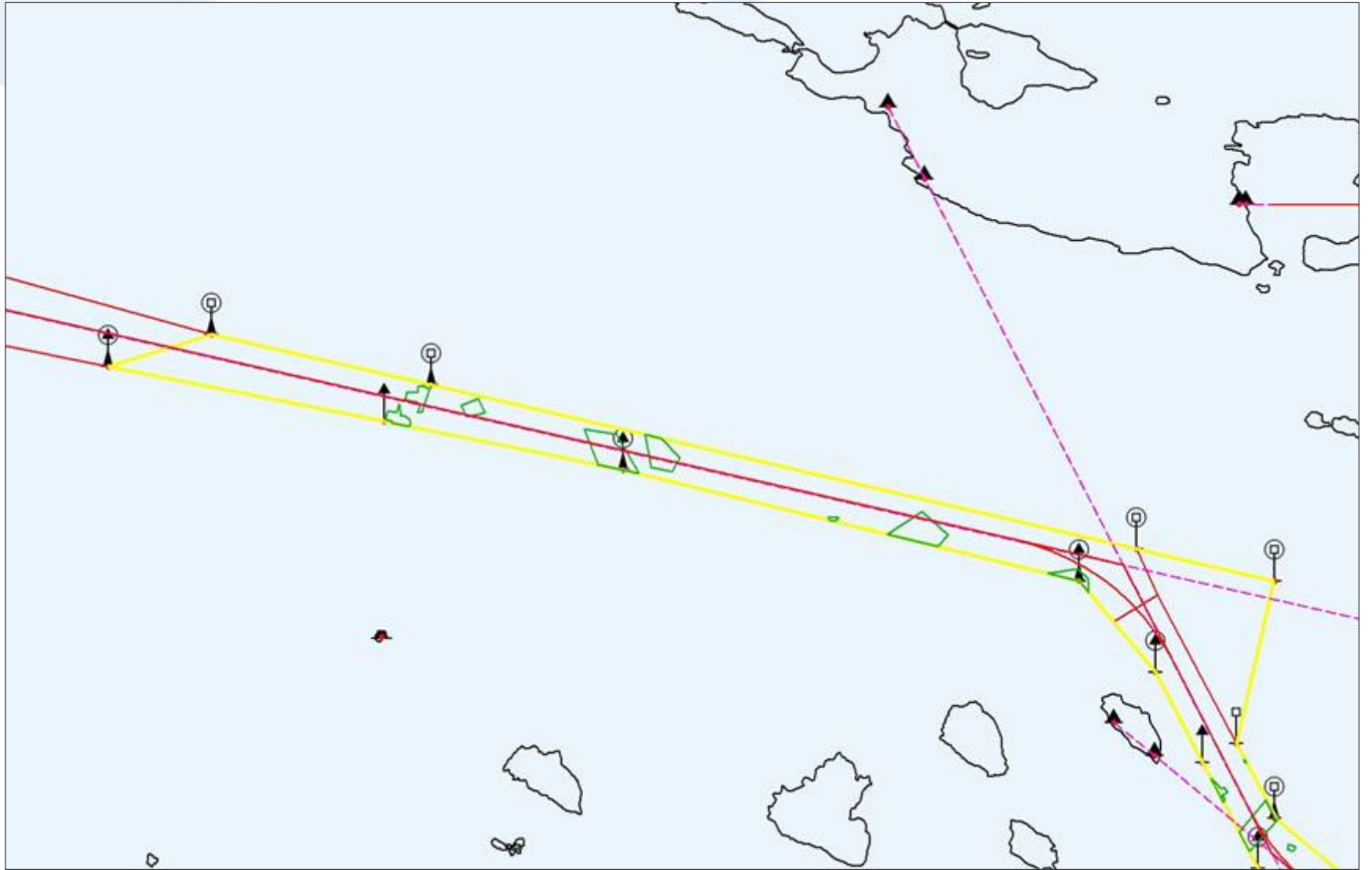
Fairway areas



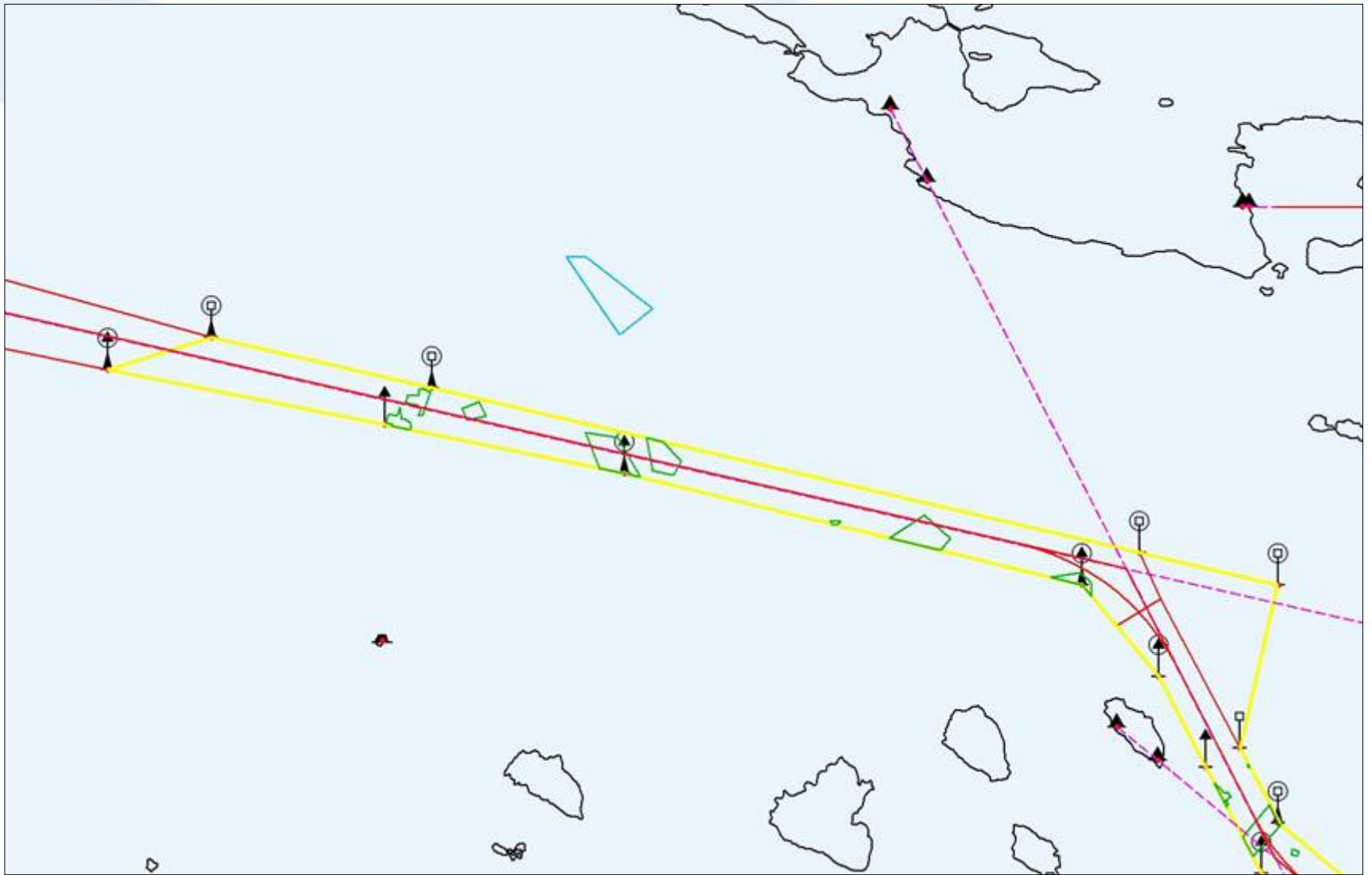
Restricted areas



Dredging areas



Spoil grounds



Some statistics

- **Fairway kilometres - 19 775 kms (FMA 16 312 km)**
 - coastal waterways 10 097 kms (FMA 8 274 kms)
 - inland waterways 9 678 kms (FMA 8 038 kms)
 - shipping lanes 4 279 kms (FMA 4 074 kms)
- **Aids to navigation - 33 357 (FMA 25 338)**
 - sea area 17 761 (FMA 12 187)
 - inland water area 15 596 (FMA 13 151)